



Architectural Woodwork Institute

design solutions

Winter 2019 | \$6.25

Computing Center

Hospital Tower

Jewelry Store

Distillery

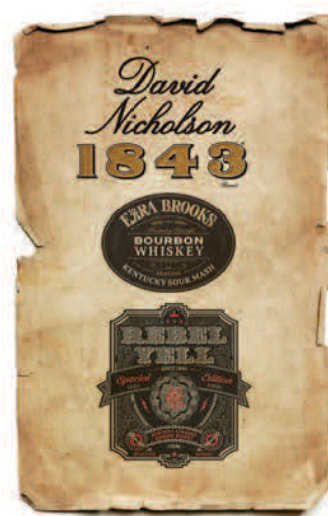
A photograph of a modern bar interior. The bar has a thick copper countertop and a wooden base. Behind the bar, a wall of horizontal wooden planks is covered with shelves of various bottles of spirits. To the left, a brick wall features a television and a fireplace. Several wooden stools are lined up in front of the bar. The lighting is warm and industrial, with exposed pipes and ductwork visible on the ceiling and walls.

Sensational Spirits.

New Kentucky Distillery Blends Contemporary and Industrial



Lux Row Distillers in Bardstown, Kentucky, has quickly become one of the top USA-based independent producers of alcohol beverage products. In 2015, as the Luxco's whiskey brands began to grow and expand, the company realized it needed to build its own site in order to move forward. The hunt began for a distillery site, focusing on Kentucky with its rich southern culture, abundant natural resources of both high quality grains and fine limestone filtered water, for a natural fit.



Steeped in the bourbon business for over 40 years, Luxco started out having others do the distilling. With over 18,000 square feet, six barrel warehouses at capacity and a 43-foot custom copper still, Lux Row Distillers is capable of producing three million gallons of spirits per year. With the new site up and running it will have the composite to process 50,000 barrels of whiskey annually.

At the new Bardstown location, Lux Row produces the very popular flagship brands – Rebel Yell, Ezra Brooks, David Nicholson and Blood Oath whiskeys– and has fast become a must-see on the Kentucky Bourbon Trail.

Visitors to the distillery view the milling process whereby grain is ground to expose the starches then put into a cooker with water. Currently, Lux Row mills corn, wheat, rye and malted barley to make two separate mashes. Cooking softens the grain to maximize starch conversion into sugar, with natural enzymes added to speed the conversion. Lux Row has two cookers capable of producing 4,000 gallons of mash each.

Yeast is added to begin the fermentation process of converting sugar into alcohol. Fermentation can take three to seven days at which point the mash is essentially beer. Lux Row has four open-top and eight close-top stainless steel fermenters that hold 8,000 gallons each.

at a glance

AWI MANUFACTURING MEMBER:

Leininger Cabinet & Woodworking Inc.

LOCATION:

Lexington, Kentucky

ESTABLISHED:

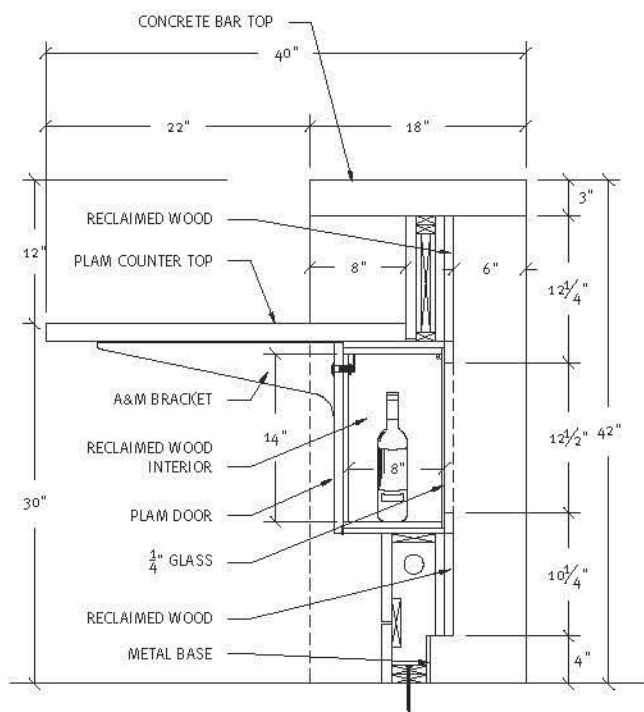
1950

FACILITY:

36,000 square feet

Licensed

QCP Company



 **ELEVATION**
@ Retail Cash Wrap







Distilling takes place in a 36-inch copper still with 19 distillation plates at over 43 feet high. Distillation uses heat to separate the alcohol from water and solids by vaporizing them. When alcohol vapors reach the top of the still they hit a condenser and turn back into liquid. After distillation the spirit is put into a new, charred Oak barrel at 125 proof or below.

Building the Site

With the process in place and the new site selected, the building team was selected. It included the architectural firm of Joseph & Joseph, Louisville, Kentucky, and the interior design firm TRH Interior Design, Boulder, Colorado. Architectural woodwork for the project was fabricated by Leininger Cabinet & Woodworking Inc., an AWI member firm located in Lexington, Kentucky.

Major architectural woodwork items produced for the 24,000 square foot project included a tasting bar, back bar, copper top, charred wood paneling, some of which was whitewashed, wood and metal furniture and displays, tasting tables, check-in and check-out desks with concrete countertops, and bathroom partitions.

According to Kristan Maynard of TRH Interior Design, styling cues focused towards industrial materials designed with a contemporary twist and feel- the vision for the Lux Row Distillery- to be timeless with a fresh and new feel to the Bourbon Trail tour experience.



These objectives were achieved, she says, “through the materials, casework, lighting, graphics, furnishings, all of which complemented each other to share the Lux story - the stained concrete, charred woods, reclaimed woods, metal work, exposed brick, unique lighting, copper bar top - each adds a wow moment to the overall design!”

Warm Wood

“We were able to create a very warm, relaxed, intimate at-home vibe by utilizing wood,” explains Michele Lux, creative director of Lux Row Distillers. “Additionally, we desired a full wood tasting bar with a copper top to really make a statement and it worked out wonderfully in the end. The copper bar is very impressive yet not overbearing.”

“Our goal is to profitably provide very high quality architectural millwork for a competitive price, so that our employees and their families will have a secure job, an opportunity to prosper, adequate health care and a bright future.”

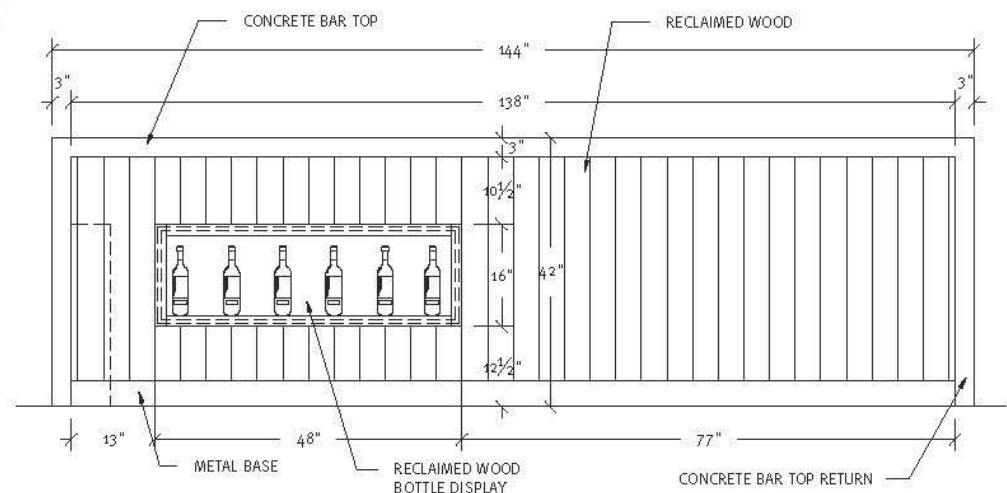
– John Leininger, President

White Oak was chosen because it is durable, beautiful and a major part of the distillation process, she adds, as well as the reclaimed barn wood from the existing structure on the property in order to meld the old with the new.



WHITE OAK

Primary design considerations, she continues, were “use of materials and design details that are unique, with an intriguing tie to the overall vision and concept. Contemporary looking with an organic, industrial twist- the flow and function was of key importance to ensure that through each phase of the tour each space was compelling and communicated a layer of the Lux Row story to be appreciated by all.”



ELEVATION
@ BAR



Nathan McKinney of Leininger Cabinet & Woodworking notes that some of the rustic White Oak Veneer was stained brown and some stained grey to appear to match the reclaimed wood. The charred wood paneling is made of Pine with a gloss finish, and the reclaimed lumber from a standing barn on the property was de-nailed and kiln dried.

Noteworthy Items

"The charred wood, which is used in several areas throughout the Visitor Center and Tasting Room is the most noteworthy," says Lux. "It is all done by hand and to perfection, giving our guests an idea of what the inside of our barrels look like. It was also important to coat and seal properly so that the char did not rub off. Additionally, by utilizing our barn wood to create the welcome desk, cash wrap counter and tasting bar, we were able to create a feeling of industrial edge meets restoration hardware on a beautiful farm in the country."

The whitewashed charred paneling was most difficult, points out McKinney, because it was used in areas where customers can touch it so the finish had to be durable enough for the char to not fall off when bumped or get charcoal on the customers. Therefore the char had to be structurally bonded before a finish could be applied. "When whitewashing we had a difficult time keeping the charcoal from turning the whitewash grey."

"We design-built most aspects of this project based on owner/designer provided photos and renderings," he continues. "We invested our time in the early stages of design allowing most questions to be answered before the products were needed allowing us to meet the project schedule."





We had a positive relationship with Leininger, and they were very collaborative regarding the interpretation of design and integration, summarizes Maynard. "Design was programmed in a sensitive sequence and the progression throughout the space within the tour. TRH needed to ensure that the Lux story was told in a thoughtful, understandable approach with design details along the way that complimented the overall customer experience."



PROJECT:
Lux Row Distillers
Bardstown, KY

PROJECT OWNER:
LRD Holdings LLC
Bardstown, KY

WOODWORKER:
Leininger Cabinet & Woodworking Inc.
Lexington, KY

ARCHITECT:
Joseph & Joseph
Louisville, KY

INTERIOR DESIGN:
TRH Interior Design
Boulder, CO

GENERAL CONTRACTOR:
Buzick Construction
Bardstown, KY

PHOTOGRAPHER:
Alex Herring
Lexington, KY

SUPPLIER MEMBER:
Flexible Materials